



HORIZON EUROPE



**THE EU
RESEARCH & INNOVATION
PROGRAMME**

2021 – 2027

**EUROPEAN PARTNERSHIPS
IN HORIZON EUROPE**

**JULIEN GUERRIER, DIRECTOR,
COMMON POLICY CENTRE,
DG RESEARCH & INNOVATION**





New approach to European Partnerships

New generation of objective-driven and more ambitious partnerships in support of agreed EU policy objectives

Key Features

- **Strategic orientation**
- **Simple architecture and toolbox**
- **Common set of criteria for the life-cycle (Horizon Europe regulation Article 10 and Annex III)**

CO-PROGRAMMED

Division of labour; the EU contribution is implemented through HE and the partners' contributions under their responsibility. Based on a Memorandum of Understanding

CO-FUNDED

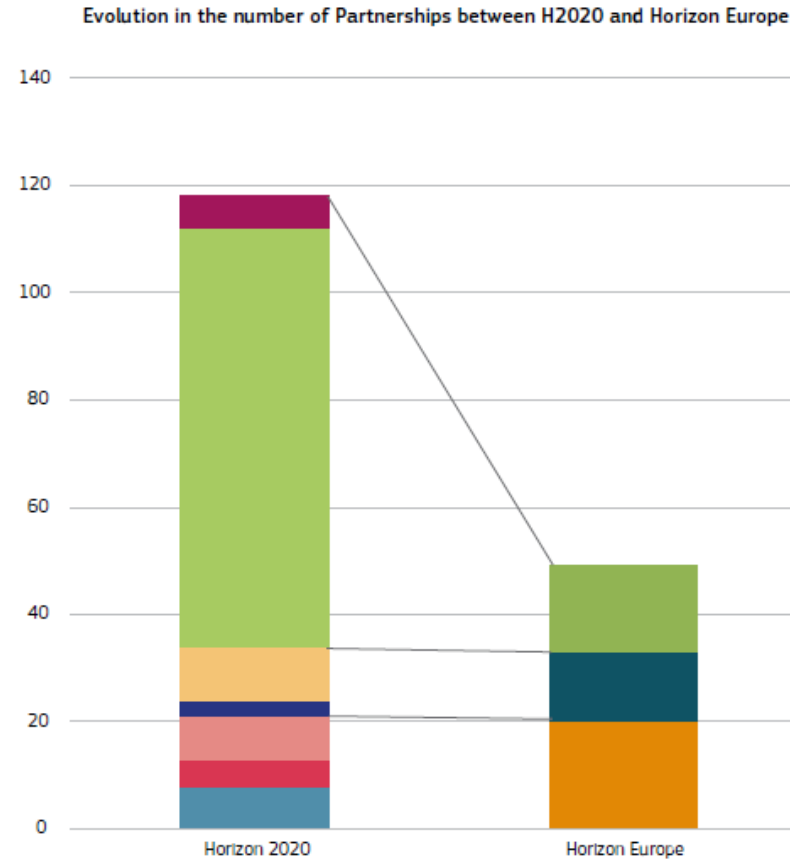
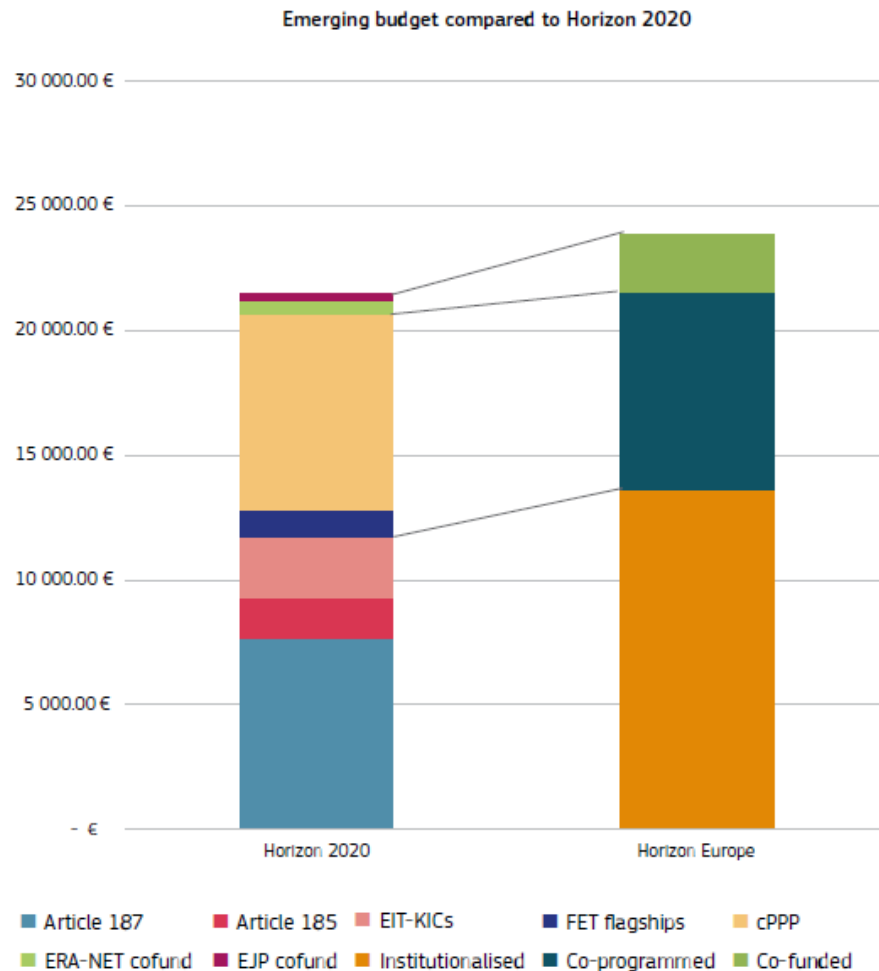
EU provides top-up funding for an integrated programme with distributed implementation by entities managing and/or funding national R&I programmes. Based on a Grant Agreement

INSTITUTIONALISED

Integrated programme with centralised implementation. Partnerships are based on Art. 185/187 of TFEU or the EIT legal acts for 2021-2027

EUROPEAN PARTNERSHIPS: REFORM AND RATIONALISATION

FIGURE 6. Partnership portfolio in H2020 and HE



THE PORTFOLIO OF 49 EUROPEAN PARTNERSHIPS

PILLAR II - Global challenges & European industrial competitiveness

PILLAR III - Innovative Europe

Cluster 1: Health	Cluster 4: Digital, industry and space	Cluster 5: Climate, energy and mobility	Cluster 6: Food, bioeconomy, natural resources, agriculture and environment	EIT: The European Institute of Innovation and Technology	European innovation ecosystems
Innovative Health Initiative	Key Digital Technologies	Clean Hydrogen	Circular Bio-based Europe	EIT InnoEnergy	Innovative SMEs
Global Health EDCTP3	Smart Networks and Services	Clean Aviation	Biodiversa+	Climate-KIC	
Transformation of Health Care Systems	High Performance Computing	Single European Sky ATM Research 3	Blue Economy	EIT Digital	
Risk Assessment of Chemicals	European Metrology (Art. 185)	Europe's Rail	Water4All	EIT Food	
ERA for Health	AI-Data-Robotics	Connected, Cooperative and Automated Mobility	Animal Health and Welfare	EIT Health	
Rare Diseases	Photonics	Batteries	Accelerating Farming Systems Transitions	EIT Raw materials	
One-Health Antimicrobial Resistance	Made in Europe	Zero-emission Waterborne Transport	Agriculture of data	EIT Manufacturing	
Personalised Medicine	Clean Steel – Low-Carbon Steelmaking	Zero-emission Road Transport	Safe and Sustainable Food Systems	EIT Urban Mobility	
Pandemic Preparedness	Processes4Planet	Built4People		Cultural and Creative Sectors and Industries	
	Globally Competitive Space Systems	Clean Energy Transition			
		Driving Urban Transitions			
				CROSS-PILLARS II and III	
				European Open Science Cloud	

■ Institutionalised partnerships (Art 185/7, EIT KICs)

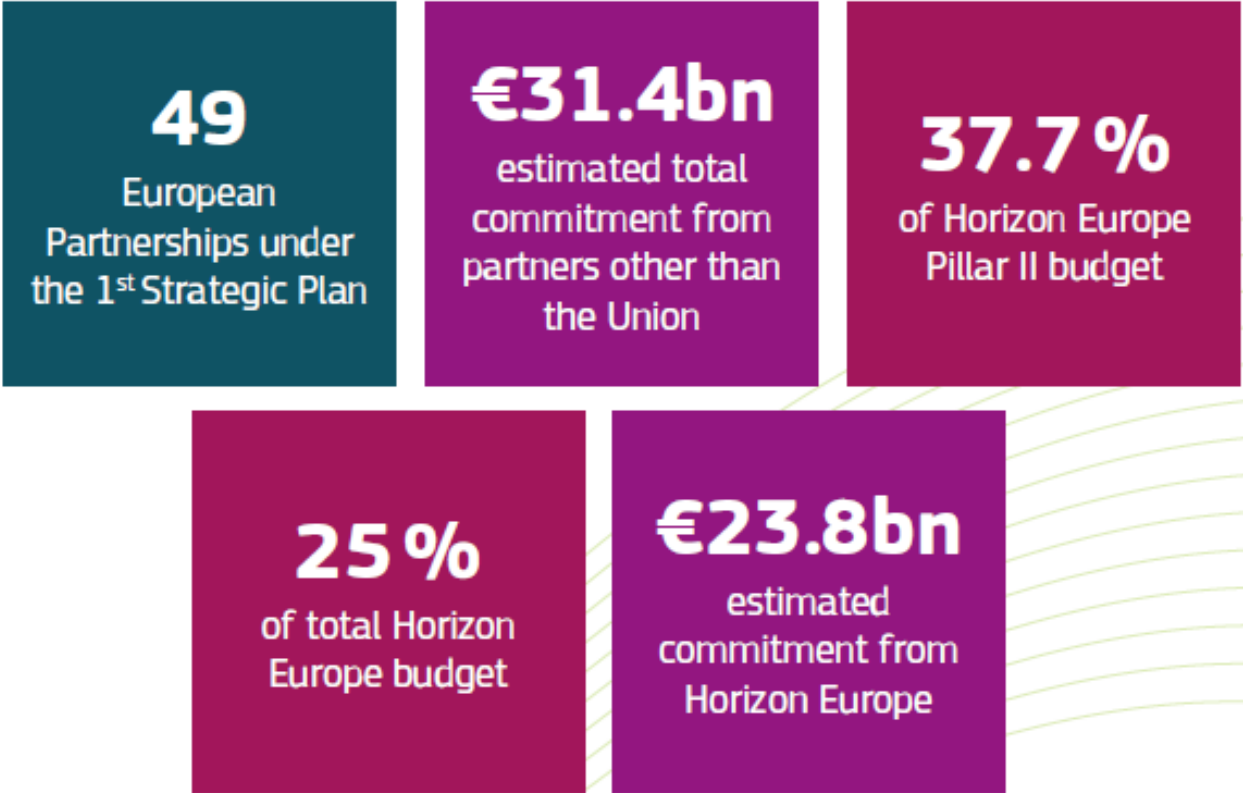
■ Co-programmed

■ Co-funded

□ Not covered in the BMR 2022 due to a later start date

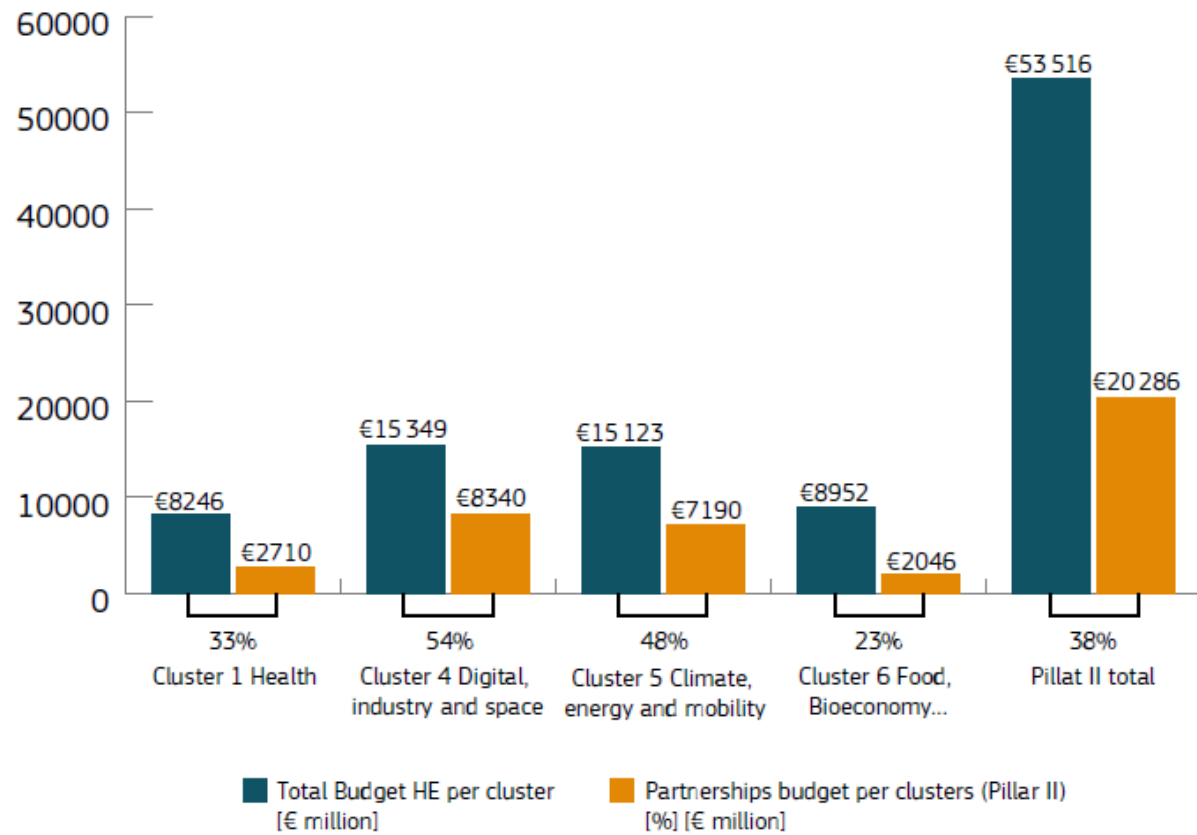
BUDGET COMMITMENTS TO EUROPEAN PARTNERSHIPS

PARTNERSHIPS



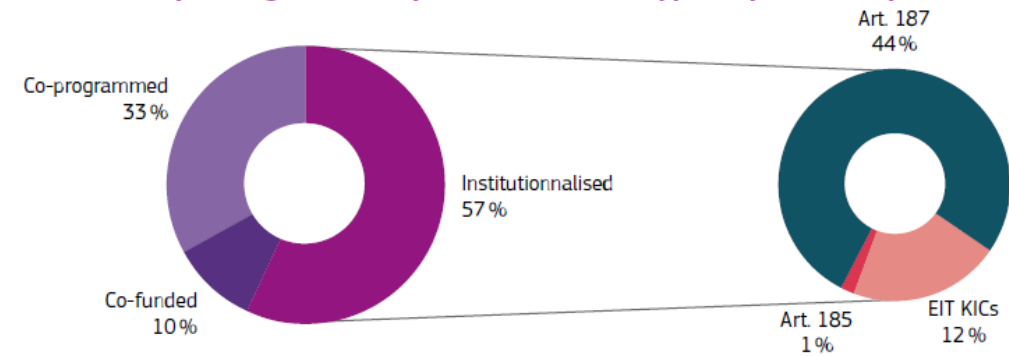
Data cut off: December 2021

FIGURE 3. European Partnerships' budgets in Horizon Europe cluster budgets



Horizon Europe commitments

FIGURE 4. Horizon Europe budget share split based on the type of partnership



Data cut off: December 2021

Source: European Commission

Member State commitments

Highlights

Member states recognise the value of Partnerships by showing increased interest and commitments in the Horizon Europe Partnerships.

Partnerships have led to a variety of impacts at national level beyond those caused by the transnational collaboration in R&I.

Partnerships have also been **instrumental in improving capacity of certain countries regarding infrastructures**. This is particularly important for the less advanced countries.

Selected Key Figures

MS/ACs have committed some € 9 billion to the first 14 'public' Partnerships under HorizonEurope.

Compared to MS/AC commitments for partnerships under Horizon 2020 (around € 3 billion), **this is a remarkable achievement** - only comparable to the total investment in partnerships from 2004 to 2020, including the EU contribution!

Greek participation in partnerships

COUNTRY FICHE: GREECE



KEY HIGHLIGHTS

Overall participation of Greece in European Partnerships under H2020 is considered beneficial as it encourages international networking and the creation of common agendas in R&I while ensuring relevance with national priorities. An item of concern is the lack of Greek partnership coordinators, despite the fact that the country is not a newcomer to ERA-NET schemes. The participation of Greece in the Art. 185 and 187 partnerships could have been broader if ESIF were eligible as a national contribution.

32 H2020 public partnerships (*) Or **32.32%** of total (99 partnerships)
42 H2020 public partnerships (*) Or **1.95%** of total
0 H2020 public partnerships (*) Or **0%** of total coordinations

Source: ERA-LEARN database (cut-off date June 2021), H2020 period (2014-2020) Excluding EIT-KICs, EuroHPC and ECSEL

(*) Horizon 2020 public-partnerships include ERA-NET CoFund, EJP, Art 185 initiatives and JPIs. Partnership participations: number of partnerships a specific country takes part as participant – for certain countries more than one national organisation may take part. Thus the participations may be more than the number of partnerships a country is part of. Total partnership participations: number of partners from a specific country participating with any role (i.e. coordinator, participant, observe, other) in partnerships. Partnership coordinations: number of partnerships a specific country coordinates.

€35.6 million

in actual national contributions in public partnerships during H2020 (2014-2020)

Or **1.60%** of total

Source: ERA-LEARN database (cut-off date June 2021), H2020 period (2014-2020)

Actual national contributions is the funding given by each country to cover the participation of national science and technology groups in the funded projects of the joint transnational calls launched by the public partnerships. Actual contributions for each researcher are the total actual contributions by a country divided by the number of researchers in the country estimated in full-time equivalents (FTE) average between 2014-2019 based on EUROSTAT data.

€1 038

per researcher FTE (average between 2014-2019 based on EUROSTAT data)

KEY AREAS ADDRESSED

Greece participates in co-funded partnerships with ERDF funds. As a result, consistency with the Research and Innovation Strategy for Smart Specialisation (RIS3) is an on/off criterion for selecting calls and topics in which to participate. The priorities of ERDF's current programming period (2021-2027) as identified in the National RIS3 through the entrepreneurial discovery process are: the agro-food chain, environment and circular economy, biosciences-health and pharmaceuticals, transport and logistics, materials-construction and industry, tourism-culture and creative industries, sustainable energy, and digital technologies. Participation in the partnerships also depends on the availability of national funds, which is seriously limited by the non-eligibility of ERDF as a national contribution to the JUs, Art. 185 and Art.187 partnerships. This has implications at the level that priorities are addressed.

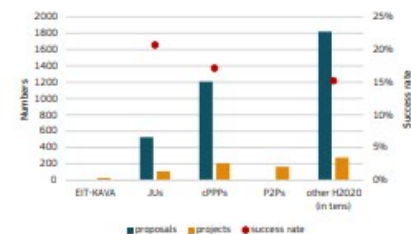
COUNTRY FICHE: GREECE

TABLE 1: Distribution of funding under the different H2020 instruments (P2Ps, JUs, cPPPs and other H2020 projects, i.e. CSAs, RIAs, IAs, etc.) across thematic priorities

THEMATIC PRIORITIES	P2Ps PROJECTS	JUs PROJECTS	cPPPs PROJECTS	OTHER H2020 PROJECTS
Nanotechnologies, Advanced Materials, Advanced Manufacturing and Processing, Biotechnology	10.07 %	1.38 %	1.87 %	12.20 %
Climate action, environment, resource efficiency and raw materials	22.22 %	0.00 %	2.39 %	6.52 %
Europe in a changing world - inclusive, innovative and reflective Societies	0.00 %		14.62 %	16.46 %
Food security, sustainable agriculture and forestry, marine and maritime and inland water research	45.87 %	20.06 %		6.50 %
Future and Emerging Technologies	3.04 %	0.00 %	1.91 %	4.32 %
Health, demographic change and wellbeing	16.42 %	8.05 %		9.00 %
Information and Communication Technologies		21.61 %	75.17 %	26.04 %
Secure, clean and efficient energy	2.37 %	12.19 %	4.04 %	10.74 %
Smart, green and integrated transport	0.00 %	36.72 %		8.22 %
	100,00 %	100,00 %	100,00 %	100,00 %

Source: ERA-LEARN database (cut-off date June 2021) based on actual national contributions for P2Ps; eCORDA based on net EU contribution; values are calculated as the share of investments of the specific instrument in the specific theme in the total investments under the specific instrument

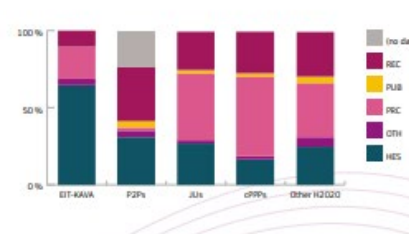
FIGURE 1: Eligible proposals, projects and success rates



Source: ERA-LEARN database for P2Ps (cut-off date June 2021); eCORDA for EIT-KAVA, JUs, cPPPs, other H2020 projects (RIAs, CSAs, etc.)

No proposal data for P2Ps, EIT-KICs (Figure 1). EIT-KAVA: KIC Added Value Activities; HES: higher education; OTH: other; PRC: private for-profit companies; PUB: public bodies; REC: research organisations (Figure 2)

FIGURE 2: Types of project beneficiaries (%)



COUNTRY FICHE: GREECE

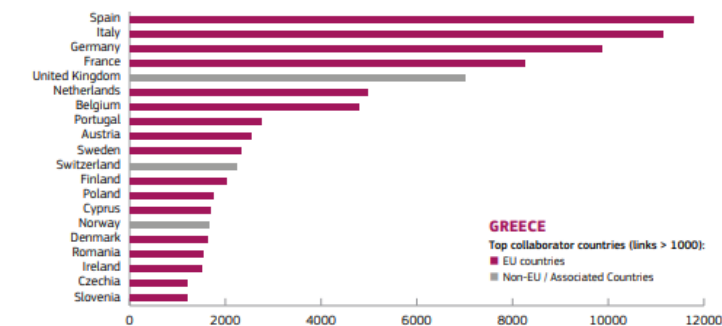
ADDITIONAL INVESTMENTS TRIGGERED

Participation in PRIMA and EuroHPC attracted national investments equal to the EU's contribution. Even though participation in JUs and Art. 185 and Art. 187 initiatives is modest, primarily due to limited national funds and administrative resources, the picture may change in the future when the central management of funds is applied.

COMPLEMENTARY AND CUMULATIVE FUNDING

Greece's participation in ERA-NET schemes was funded through ESIF/ERDF; the funding scheme involved certain challenges related mainly to the restrictions arising from requirements for a regional distribution of ESIF funds and the different timelines for implementation, especially towards the end of programming periods.

FIGURE 3: Top collaborators of Greek researchers under Horizon 2020 projects (including JUs, cPPPs, P2Ps and other H2020 projects)



Source: eCorda (showing countries of >1000 links)

SUCCESS STORIES

- From the perspective of a funding agency or a research performing organisation, PRIMA is a success story as it provides opportunities for cooperation with countries in the immediate neighbourhood outside the EU and it addresses research and innovation fields that are not adequately covered in H2020 calls.
- Greece's participation in European partnerships under H2020 has been a learning exercise for researchers and the funding authority (General Secretariat for Research and Innovation) mainly related to programme design and coordination.
- It is worth mentioning that certain Greek regions and especially the Region of Western Greece, which has a very active research and innovation ecosystem in the area of materials science, among others, participated independently in ERA-NET schemes and funded the participation of their institutions with regional funds.

Read more: <https://ec.europa.eu/assets/rtd/bmr/2022/>

Greek participation in EU R&I partnerships

- **H2020: Greece's participation in PRIMA and EuroHPC attracted national investments equal to the EU's contribution.** Although participation in Art.185 and Art.187 initiatives is modest, primarily due to limited national funds and administrative resources, picture may change in future when central management of funds is applied
- **From the perspective of a funding agency or a research performing organisation, PRIMA is a success story as it provides opportunities for cooperation with countries in the immediate neighbourhood** outside the EU. It also addresses research and innovation fields that are not adequately covered in H2020 calls
- **Greece will participate actively in the new European Partnerships** under Horizon Europe, with **indicative commitments of around EUR 85.6 million** (compared to EUR 36 million of actual contribution to the Horizon 2020 partnerships)
- **Greece's commitment letter for the 2023/24 partnerships is still expected**



Thank you!

#HorizonEU

#EUPartnerships

Report: https://ec.europa.eu/info/files/performance-european-partnerships-biennial-monitoring-report-2022-partnerships-horizon-europe_en

Factsheet: https://ec.europa.eu/info/files/biennial-monitoring-report-2022-partnerships-horizon-europe-factsheet_en

Interactive report: <https://ec.europa.eu/assets/rtd/bmr/2022/>



© European Union 2021

Unless otherwise noted the reuse of this presentation is authorised under the [CC BY 4.0](https://creativecommons.org/licenses/by/4.0/) license. For any use or reproduction of elements that are not owned by the EU, permission may need to be sought directly from the respective right holders.

Image credits: © ivector #235536634, #249868181, #251163013, #266009682, #273480523, #362422833, #241215668, #244690530, #245719946, #251163053, #252508849, 2020. Source: Stock.Adobe.com. Icons © Flaticon – all rights reserved.